

HAVEN SQUARE

HAVEN AVENUE & TOWN CENTER DRIVE, RANCHO CUCAMONGA, CA



PROJECT FEATURES

- + Anchored by Team Physical Therapy.
- + Across from Terra Vista Town Center, a regionally-prominent community center anchored by Target, Ross, Hobby Lobby, HomeGoods, Michaels, Old Navy, LA Fitness, and Big 5 Sporting Goods.
- + Part of 1,320-acre master planned community of Terra Vista, with a projected build-out of 8,000 households.
- + Strong daytime population of an estimated 80,785 employees in a 3-mile radius.

DEMOGRAPHICS

Radius	1-Miles	2-Miles	3-Miles
Estimated Population	23,958	78,920	145,744
Estimated Avg. HH Income	\$86,781	\$86,482	\$88,986

TRAFFIC COUNT

Haven Ave. 28,680 cars/day

Source: City of Rancho Cucamonga 2010

LEWIS LEASING CONTACT
retailinfo@lewismc.com

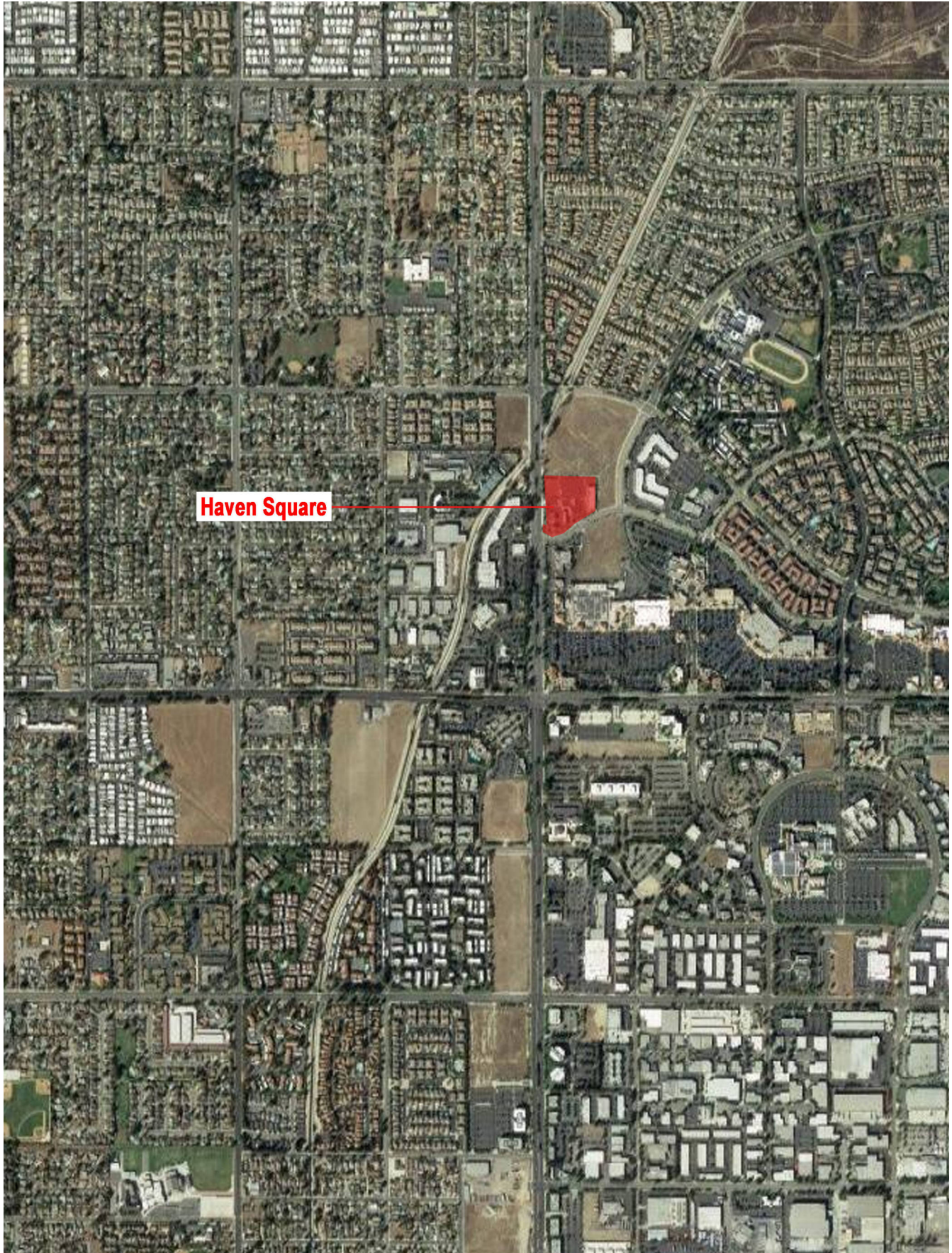


Lewis Retail Centers

Offered by Lewis Management Corp., a licensed real estate broker, DRE License 01994759. This information has been obtained from sources believed reliable. We have not verified it and make no guarantee, warranty or representation about it. Any projections, opinions, assumptions or estimates used are for example only and do not represent the current or future performance of the property. You and your property advisors should conduct a careful, independent investigation of the property to determine to your satisfaction the suitability of the property for your needs.

HAVEN SQUARE

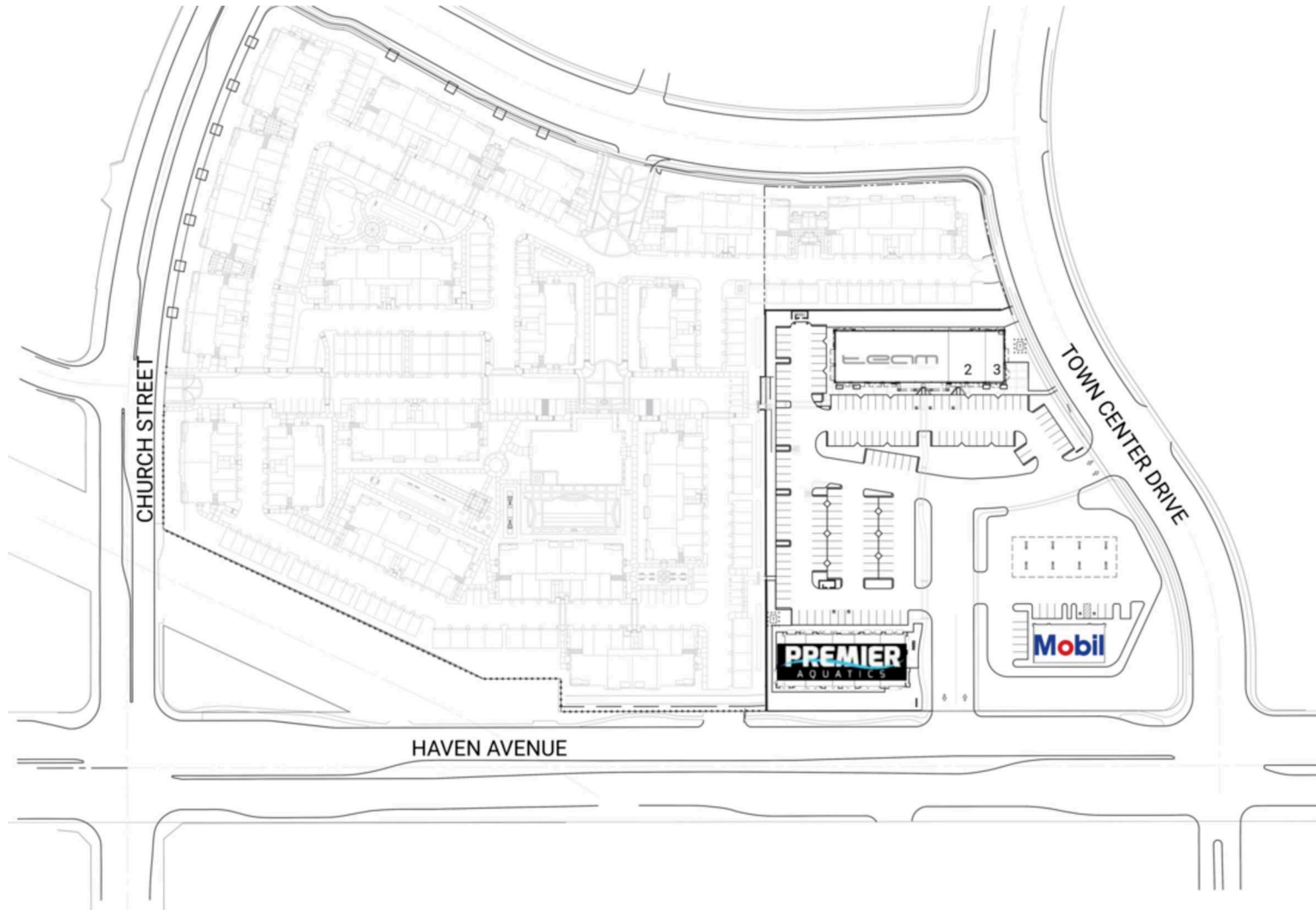
HAVEN AVENUE & TOWN CENTER DRIVE, RANCHO CUCAMONGA, CA



HAVEN SQUARE

HAVEN AVENUE & TOWN CENTER DRIVE, RANCHO CUCAMONGA, CA

	TENANT	SQFT
1	Team Physical Therapy	8,400
2	Little Star Pediatric Urg...	2,753
3	Dental Office	1,512
4	Mobile Gas	
8	Premier Aquatics	1,260



LEWIS LEASING CONTACT
retailinfo@lewismc.com



Lewis Retail Centers

Offered by Lewis Management Corp., a licensed real estate broker, DRE License 01994759. This information has been obtained from sources believed reliable. We have not verified it and make no guarantee, warranty or representation about it. Any projections, opinions, assumptions or estimates used are for example only and do not represent the current or future performance of the property. You and your property advisors should conduct a careful, independent investigation of the property to determine to your satisfaction the suitability of the property for your needs.

SUMMARY PROFILE

2000-2010 Census, 2016 Estimates with 2021 Projections

Calculated using Weighted Block Centroid from Block Groups

Lat/Lon: 34.1111/-117.5734

RS1

Haven Square		1 mi radius	2 mi radius	3 mi radius
Rancho Cucamonga, CA 91730				
POPULATION	2016 Estimated Population	23,958	78,920	145,744
	2021 Projected Population	24,729	81,597	150,784
	2010 Census Population	21,941	73,413	136,718
	2000 Census Population	15,703	59,050	109,238
	Projected Annual Growth 2016 to 2021	0.6%	0.7%	0.7%
	Historical Annual Growth 2000 to 2016	3.3%	2.1%	2.1%
	2016 Median Age	31.7	34.1	34.5
HOUSEHOLDS	2016 Estimated Households	8,915	28,325	51,310
	2021 Projected Households	9,235	29,397	53,300
	2010 Census Households	8,030	25,887	47,307
	2000 Census Households	5,614	20,000	36,246
	Projected Annual Growth 2016 to 2021	0.7%	0.8%	0.8%
	Historical Annual Growth 2000 to 2016	3.7%	2.6%	2.6%
RACE AND ETHNICITY	2016 Estimated White	52.9%	56.2%	56.5%
	2016 Estimated Black or African American	13.8%	11.0%	10.5%
	2016 Estimated Asian or Pacific Islander	11.7%	11.6%	11.8%
	2016 Estimated American Indian or Native Alaskan	0.8%	0.7%	0.7%
	2016 Estimated Other Races	20.8%	20.6%	20.5%
	2016 Estimated Hispanic	39.4%	39.9%	40.0%
INCOME	2016 Estimated Average Household Income	\$86,781	\$86,482	\$88,986
	2016 Estimated Median Household Income	\$75,309	\$73,987	\$75,571
	2016 Estimated Per Capita Income	\$32,302	\$31,057	\$31,342
EDUCATION (AGE 25+)	2016 Estimated Elementary (Grade Level 0 to 8)	4.1%	3.6%	4.2%
	2016 Estimated Some High School (Grade Level 9 to 11)	5.2%	5.0%	5.2%
	2016 Estimated High School Graduate	19.7%	22.1%	21.6%
	2016 Estimated Some College	28.8%	29.2%	28.8%
	2016 Estimated Associates Degree Only	8.3%	9.7%	10.0%
	2016 Estimated Bachelors Degree Only	22.6%	19.7%	19.3%
	2016 Estimated Graduate Degree	11.3%	10.6%	11.0%
BUSINESS	2016 Estimated Total Businesses	1,522	3,790	7,190
	2016 Estimated Total Employees	16,521	38,222	74,382
	2016 Estimated Employee Population per Business	10.9	10.1	10.3
	2016 Estimated Residential Population per Business	15.7	20.8	20.3

This report was produced using data from private and government sources deemed to be reliable. The information herein is provided without representation or warranty.